

Streets of Fire

**When Turf
Turns Dangerous!**



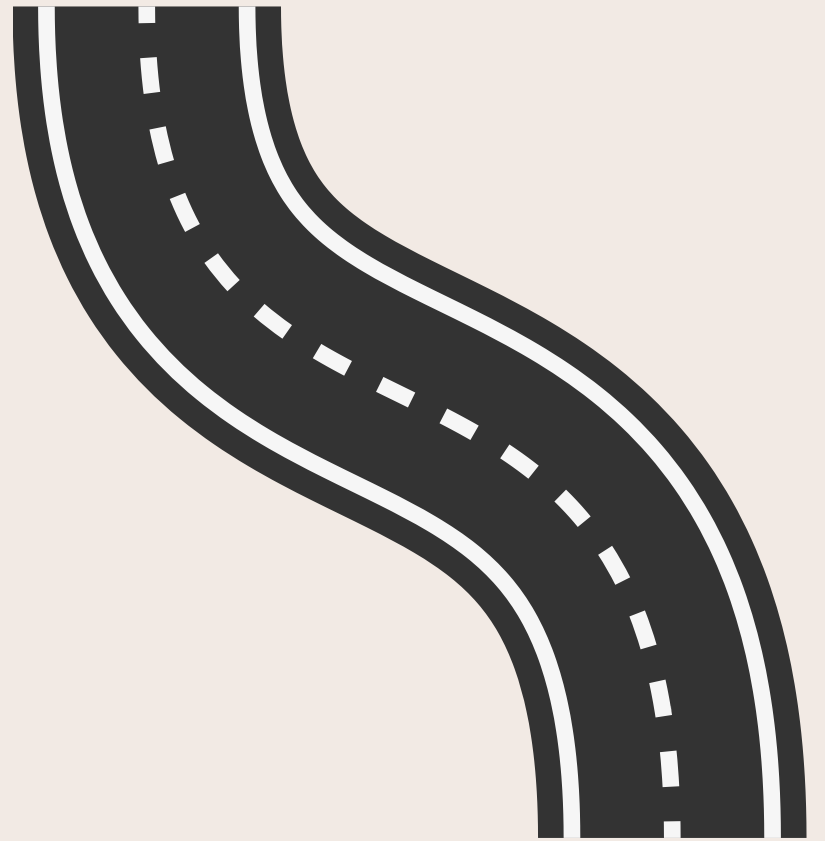


How Hot Can Turf Get?

On a **110°F +** day in Arizona,
outdoor turf can heat up to
dangerously high temperatures,
which pose **serious risks** for
contact burns.



Asphalt



Temperature Range:

150°F – 180°F

Concrete



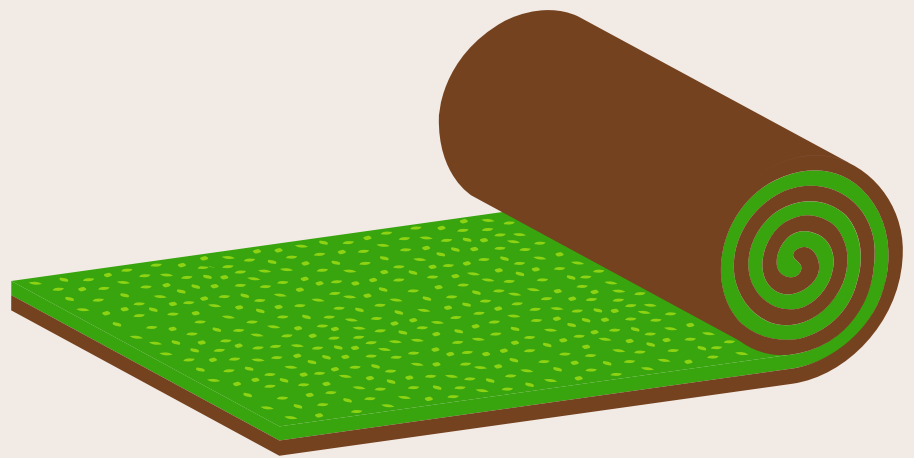
Temperature Range:

140°F – 175°F

Artificial Turf

Temperature Range:

120°F – 180°F



Metal

Temperature Range:

130°F – 180°F



Dirt

Temperature Range:

110°F – 140°F



Rocks

Temperature Range:

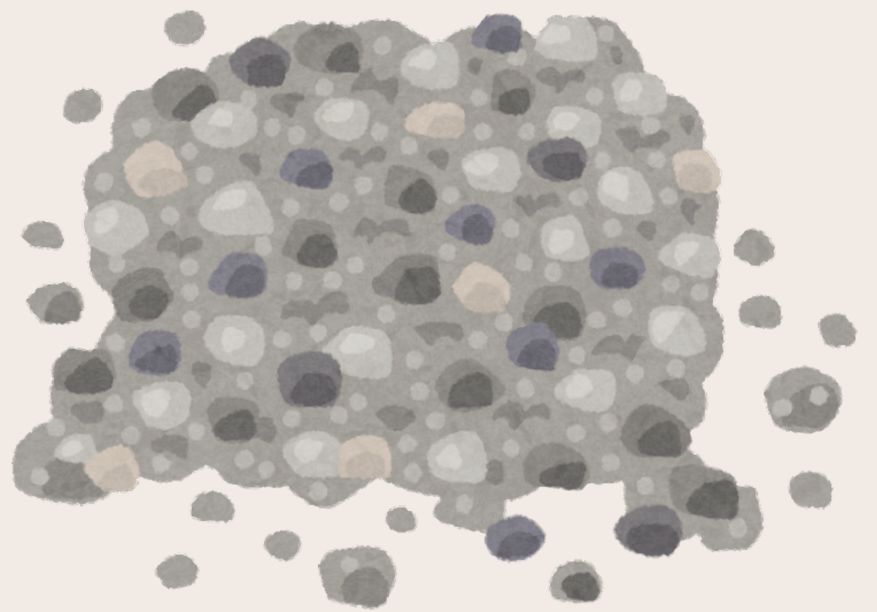
135°F – 170°F



Gravel

Temperature Range:

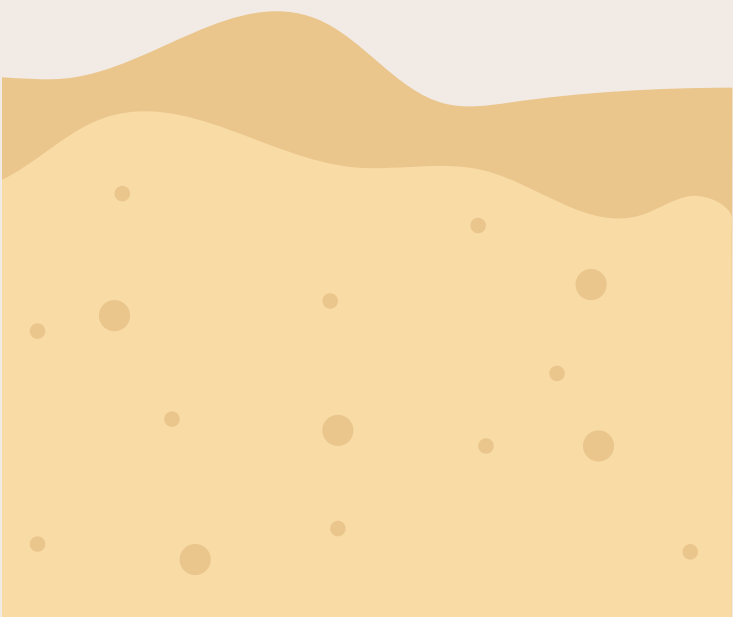
120°F – 145°F



Sand

Temperature Range:

120°F – 150°F



Be Turf Smart

Hot turf can cause contact burns in just seconds, but it doesn't have to.

Be aware, stay informed, and take precautions!

Testing the turf, using **shade**, and wearing proper **footwear** can go a long way in preventing contact burns and keeping everyone safe.

Your awareness can make all the difference!



Don't Wait to Seek Care

- Even small burns can be **deeper than they appear**. Delaying care can lead to **serious complications and damage**.
- Seek medical care **immediately** if you, or someone you know, has **suffered burns** from hot pavement or other surfaces.
- When in doubt or if you think a life is in danger, **call 911**.



Burn injury care you can trust.

*The Diane & Bruce Halle Arizona
Burn Center - Valleywise Health*

Burn Center: 602-344-5726

If you are experiencing a medical emergency, call **911**.